

CHEMICAL.MARKET

Where Chemistry Meets Innovation

CLEAN SCIENCE
THAT ENABLES
Self-Care





CONTENT

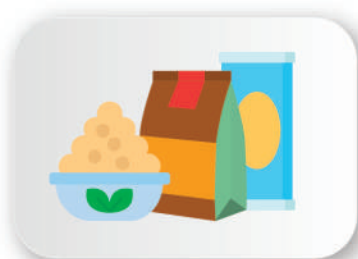
ABOUT US.....	04
OUR PRINCIPALS	05
ACTIVE INGREDIENTS	06
SURFACTANTS	12
EMOLLIENTS	14
EMULSIFIERS	15
PRESERVATIVES.....	16
POLYMERS	17
EXOTIC BUTTERS	18
NATURAL AND ORGANIC OILS.....	19



ABOUT US

Chemical.Market is a one-stop solution-provider for the Chemical industry. We aim to streamline chemical procurement through intuitive digitized processes. As a reliable supply partner, we can offer customized procurement, competitive pricing, contract manufacturing and technical support.

Our product portfolio consists of chemicals suitable for a wide range of end-use industries including personal-care, pharmaceuticals, food-ingredients, petrochemicals and paints. We are rapidly expanding across categories, and we cater to customers both in India as well as overseas.



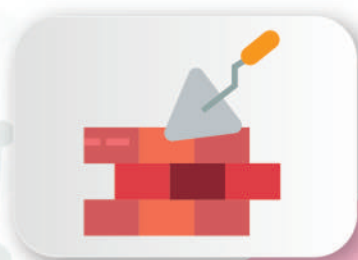
Animal Nutrition & Feed



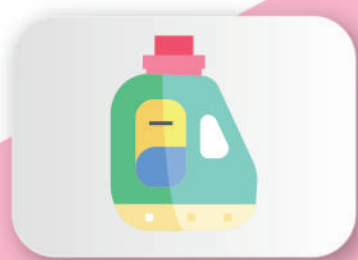
Agro Chemicals



Petro Chemicals



Coating & Construction



Cleaning Ingredients



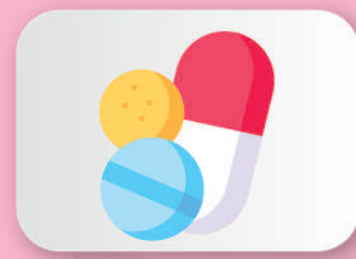
Personal Care Ingredients



Fuels, Fluids & Lubricants



Food & Nutrition



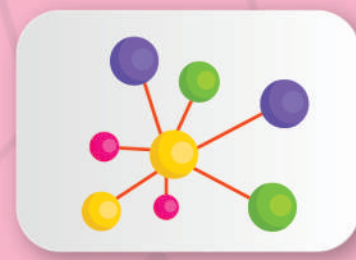
Pharma & Contract Manufacturing



Paint & Coatings



Plastic, Polymer & Composites



Others

OUR PRINCIPALS



DCT Korea



Drop Bio



Fenchem Biotek



Amhwa Biopharm Co. Ltd.



ACTIVES

HYDROLYZED PROTEIN

BRAND NAME	INCI NAME	PROPERTIES	APPLICATION	APPEARANCE	DOSAGE
DropCare CP	Hydrolyzed Collagen (Fish Collagen Peptide)	• Collagen hydrolysate small molecular weight, easy to absorb, effectively repair skin damage.	Hair Care	White to off white powder	0.5-3%
		• Promote collagen synthesis, enhance skin firmness and elasticity.	Skin Care		
		• Repair damage hair, reduce hair split and rough.			
DropCare HWP	Hydrolyzed Wheat Protein	• Natural grain small molecule protein, safe and non-irritating.	Moisturizing	Light yellow powder	0.1-1%
		• Rich in Vitamin E, B, & protein.	Hair care		
		• It absorbs on the damage part of the hair and repair the damaged hair.	Skin care		
DropCare Hydr K	Hydrolyzed Keratine	• Keratine Hydrolysate, rich in micromolecule peptides, easy to absorb, improve skin elasticity.	Skin care	Light yellow powder	0.5-5%
		• Enhance cuticle moisture retention.	Hair care		
DropCare Pearl H	Hydrolyzed Pearl	• Rich in a variety of amino acids, trace elements, vitamins etc.	Moisturizing	Off white powder	0.5-5%
		• Inhibit the activity of tyrosinase, whitening and fade spots.	Anti-Wrinkle		
		• Increase skin elasticity and reduce wrinkles.	Whitening		



ACTIVES


BEAUTY PEPTIDE

BRAND NAME	INCI NAME	PROPERTIES	APPLICATION	APPEARANCE	DOSAGE
DropPet TR -32P	Tripeptide-32	• Regulate day and night gene expression to prevent cell ageing.	Anti-Wrinkle	-	0.005-0.02%
		• Regulate cell biological clock and improve cell activity.	Repair skin micro inflammation damage		
DropPet ATP5P	Acetyl Tetrapeptide-5	• It can inhibit the permeability of capillaries and reduce the water accumulation of eye bags.	Anti-Ageing	White powder	0.005-0.05%
		• Inhibit skin glycosylation reaction, reduce the loss of collagen, prevent the generation of wrinkles.	Under Eye Products		
DropPet Lips Hot	Palmitoyl Tripeptide-1, Ethylhexyl palmitate, Tribehenin Sorbitan Sterate, Vanillyl Butyl Ether	• Reduce lip wrinkles and moisturize your lips.	Lip Plump	White to milky paste	0.5-3%
		• Promote lip blood circulation, heat sense is obvious.			
DropPet APA	Acetyl tetrapeptide-5 Palmitoyl Pentapeptide-4, Water Acetyl Hexapeptide-8, Polysorbate 20, 1-2-Hexyldicol	• Enrich and moisturize your lips to make them fuller.	Eye tightness, Edema Removal	Colorless liquid	Daily care - 1-3% Advance Care - 3-5%
		• It helps to reduce the edema and tighten the skin around eye-side.			



ACTIVES

MOISTURIZING

BRAND NAME	INCI NAME	PROPERTIES	APPLICATION	APPEARANCE	DOSAGE
ProHA Sodium Hyaluronate (High Molecular Weight) 1.5Mda- 2.5Mda	Sodium Hyaluronate	• High Water retention, lubricating and film forming.	Cream/Lotion	White or almost white powder or granules	0.05- 0.1%
			Sunscreen Gel		
			Facial Mask		
			Hair Care		
ProHA Sodium Hyaluronate (Medium Molecular Weight) 1.5Mda- 1.5Mda	Sodium Hyaluronate	• Keep Skin moisture and lubricating for a long time.	Cream/Lotion	White or almost white powder or granules	0.05- 0.3%
			Facial Mask		
			Hair Care		
ProHA Sodium Hyaluronate (Low Molecular Weight) 0.1Mda-0.5Mda	Sodium Hyaluronate	• Nourishing the skin easily absorbed by skin, increase skin nutrition.	Cream/Lotion	White or almost white powder or granules	0.05- 0.3%
			Sunscreen Gel		
ProHA Sodium Hyaluronate (Super Low Molecular Weight) 0.1Mda-0.5Mda	Sodium Hyaluronate	• Transdermal absorption, deep moisturizing, repairing damaged cells.	Cream/Lotion	White or almost white powder or granules	0.05- 0.5%
			Sunscreen Gel		
	Snail Extract	• High concentration in active substance such as Allantoin, Collagen, Glycosaminoglycans, Hyaluronic Acid, Glycolic acid and minerals.	Anti-Ageing	Colorless liquid	0.05- 0.5%
		• Cosmos by Ecocert certification	Brightening		
		• Naturally-Derived Ingredient	Moisturizing		
STAR-VCE	Ethyl Ascorbic Acid	• Excellent skin whitening and brightening activity	Whitening	White crystals or crystalline powder	0.5-20%
		• High antioxidation effect	Anti-Inflammatory		
		• Collagen synthesis effect. Structurally stabilized ascorbic acid	Moisturizing		

ACTIVES

MOISTURIZING

BRAND NAME	INCI NAME	PROPERTIES	APPLICATION	APPEARANCE	DOSAGE
GlucanReal®	Water Beta-Glucan Glycerine, 1-2 Hexandiol	• Water soluble polysaccharides, average molecular weight 1.7×10^6 Da	Anti-Inflammatory	Colorless or light yellow liquid	0.5-10%
		• Excellent moisturizing and moisturizing durability. Soothing the skin	Anti-Oxidation		
		• Improvement of skin barrier	Moisturizing		
CentellaREAL™	Centella Asiatica Extract Butylene Glycol	• Wound healing	Wound healing	Light Brown Liquid	0.5-10%
		• Antioxidation effect	Anti-Oxidation		
		• Increase in collagen synthesis	Anti-Inflammatory		
Kombucha REAL™	Saccharomyces/ Xylinum/ Black Tea Ferment Glycerine 1, 2 Hexandiol	• Kombucha REAL is a product made by fermenting black tea with yeast and acetic acid bacteria and rich in minerals, proteins, lactose, lactic acid and vitamins, which help strengthen the skin barrier and protect the skin from external irritation.	Anti-Oxidation	Dark Brown Transparent Liquid	0.5-10%
		• Kombucha has more than four times the antioxidant power compared to green tea, maximizes the production of many antioxidants such as probiotics, polyphenols and vitamins in the fermentation process with beneficial bacteria.	Anti-Inflammatory		
D-panthenol	Provitamin B5	• Moisturizing, hair softening and shiny effect. Skin-Smooths out wrinkles & fine lines.	Skin cream/Lotion	Viscous Liquid	1-10%



ACTIVES

LIGHTENING & WHITENING

BRAND NAME	INCI NAME	PROPERTIES	APPLICATION	APPEARANCE	DOSAGE
Alpha Arbutin	Alpha Arbutin	• Natural skin lightening agent.	Cream/Serum	White Crystals or Crystalline Powder	1.0-7.0 %
		• Anti- Pigmentation. Skin spot corrector.	Lotion/Gel		
Kojic Acid	Kojic Acid	• Kojic Acid is widely used in cosmetic, as a skin lightening agent due to its potential to inhibit the enzyme tyrosinase.	Cream	White or off White Powder	0.2-1%
		• Kojic Acid also has antibacterial, antifungal and antioxidant properties.	Lotion		
Niacinamide	Niacinamide	• Lightening & Brightening, Anti-inflammatory, stable to light and heat.	Lotion/gel/serum	White Powder	0.5- 5.0%
Kojic Acid Dipalmitate	Kojic Acid Dipalmitate	• Lightening & Brightening, Anti-inflammatory, stable to light and heat.	Cream/Lotion	White Powder	1.0-5.0%



ACTIVES

ANTI-INFLAMMATION

BRAND NAME	INCI NAME	PROPERTIES	APPLICATION	APPEARANCE	DOSAGE
Vitamin E	DL-alpha Tocopheryl Acetate	• Anti-oxidant	Cream/Lotion	Yellowish Viscous Liquid	0.1-5.0%
	D-alpha Tocopherol Acetate		Serum/Facial		
	Tocopherol Acetate		Make up/ Shampoo		




CONDITIONING AGENT

BRAND NAME	INCI NAME	PROPERTIES	APPLICATION	APPEARANCE	DOSAGE
PQ 10	Polyquaternium 10	• Water solubility, cationic polymer to provide thickening and anti-static conditioning properties.	Shampoo/ hair mask	Off white powder	0.1-0.8%
PQ 39	Polyquaternium 39	• Anti-static and film forming	Shampoo/ hair mask	Colorless viscous liquid	0.5-5.0%



SURFACTANTS

ALKYLPOLYGLUCOSIDE


BRAND NAME	INCI NAME	PROPERTIES	APPLICATION	APPEARANCE	DOSAGE
FM0810 	Caprylyl/Capryl Glucoside	• Excellent gentle cleansing surfactants in skin care products.	Shampoo/ Facewash	Light yellow viscous Liquid	10%-40%
		• Highly effective solubilizing agent for essential oils and fragrances as well as cationic surfactants.	Facewash/ Shower gel		
FM 1200 	Lauryl Glucoside	• Very mild & readily biodegradable.	Shower gel	Light yellow turbid liquid/paste	10%-40%
		• Lauryl glucoside creates an excellent and stable foam. • It shows good compatibility with all other types of surfactants.	Shampoo Facewash		
FM 2000 	Decyl Glucoside	• Decyl glucoside is a non-ionic surfactant that is used as a foaming, cleansing, conditioning, or emulsifying agent.	Shampoo	Yellowish slightly cloudy liquid	10%-40%
		• It can be used as a base surfactant or a co-surfactant in cleansers.	Cleansing Lotion		

AMPHOTERIC SURFACTANTS

BRAND NAME	INCI NAME	PROPERTIES	APPLICATION	APPEARANCE	DOSAGE
CAPB	Coco Amido Propyl Betaine	• CAPB is a preservative-free, amphoteric surfactant.	Facewash/ Baby shampoo	Colourless to light yellow liquid	10%-40%
		• It has excellent foaming properties in hard and soft water.	Bodywash/ Detergent liquid		

SURFACTANTS

AMINO ACID -BASED SURFACTANT

BRAND NAME	INCI NAME	PROPERTIES	APPLICATION	APPEARANCE	DOSAGE
FMSOFT SCG-25	Sodium Cocoyl Glutamate & Aqua	• It is a cleansing agent and a good emulsifier that leaves the skin gentle, cleaner, conditioned and smoother without being too harsh.	Liquid soap/ Toothpaste	Colorless liquid	5%-30%
		• It has a stabilizing effect on the bubbles, which means that they last longer before breaking down.	Body wash		
FMFRES SLS-30 	Sodium Lauroyl Sarcosinate & Aqua	• It is derived from sarcosine and natural fatty acids.	Body wash/ Shower gel	Clear, colorless to light yellow liquid	5%-30%
		• It has high foaming ability. It produces creamy, rich foam.	Shampoo/ Soap		
FMFRES G CS30	Sodium Cocoyl Glycinate & Aqua	• Sodium Cocoyl Glycinate is primarily a surfactant that reduces the surface tension of the formulation and is responsible for softening the skin, and also sometimes hair.	Body wash/ Shower gel	Colorless to pale yellow liquid	5%-30%
		• It is non-irritating and creates a rich creamy lather upon application.	Shampoo/ Soap		

ANIONIC SURFACTANTS

BRAND NAME	INCI NAME	PROPERTIES	APPLICATION	APPEARANCE	DOSAGE
FM-SCI 80	Sodium Cocoyl Isethionate	• Very low irritation, mild to skin and eyes.	Shampoo	White powder	10%-50%
		• Excellent foamer, rich and abundant lather.	Soap		
		• Rinse free from skin.	Body wash		




EMOLLIENTS

BRAND NAME	INCI NAME	PROPERTIES	APPLICATION	APPEARANCE	DOSAGE
IPM	Iso Propyl Myristate	•Excellent emollient & Skin conditioner.	Cream	Colorless clear liquid	1-20%
		•It gets readily absorbed in skin and gives silky soft feel.	Lotion		
		•Being colorless & odorless makes it suitable, use as solvent for actives & fragrance.	Fragrance		
CCTG	Caprylic Capric triglyceride	•Caprylic/capric triglyceride is a super smooth ingredient that locks in moisture on the skin and hair without leaving them greasy or oily.	Cream/Lotion	Colorless clear viscous liquid	1-35%
		•It is also an antioxidant that protects the skin and preserves the product it is added in.			



EMULSIFIERS

BRAND NAME	INCI NAME	PROPERTIES	APPLICATION	APPEARANCE	DOSAGE
DropCare CG68 (Ecocert)  COSMOS APPROVED	Cetearyl Glucoside & Cetearyl Alcohol	• Non irritating, will not stimulate formation of acne.	Cream	White to off white granular solid	0.5- 5%
		• Unique liquid crystalline structure,excellent emulsifying ability.	Lotion		
		• Excellent stability and viscosity in cationic surfactant system.	Conditioner		



PRESERVATIVES

BRAND NAME	INCI NAME	PROPERTIES	APPLICATION	APPEARANCE	DOSAGE
Phenoxyethanol 5 ppm	Phenoxyethanol 5 ppm	<ul style="list-style-type: none"> Phenoxyethanol is used as an antibacterial ingredient or preservative to prevent cosmetic and skin care products from spoiling. 	Cream	Colorless clear viscous liquid	0.3-1%
			Lotion		
			Shampoo		
Phenoxyethanol 10 ppm	Phenoxyethanol 10 ppm	<ul style="list-style-type: none"> Phenoxyethanol is used as an antibacterial ingredient or preservative to prevent cosmetic and skin care products from spoiling. 	Cream	Colorless clear viscous liquid	0.3-1%
			Lotion		
			Shampoo		



POLYMER

BRAND NAME	INCI NAME	PROPERTIES	APPLICATION	APPEARANCE	DOSAGE
Cosjel	Glycerine and Glyceryl acrylate Acrylic acid copolymer and PVM/MA	• Cosjel series has structure of Metacrylate, as a superior moisturizer with the function of preventing water release.	Cream	Liquid	5-50%
		• It shows excellent stable structure and easy to be dissolved in water without a certain emulsifying system to dissolve.	Makeup		
Eligel-10	Hydroxyethyl Acrylate / Sodium acryloyl dimethyl taurate copolymer, Isohexadecane, Sorbeth-30 Tetraoleate	• Eligel-10 is high molecular polymer by inverse emulsion polymerization using EWG 1 st grade hydrophilic monomer and surfactants that are highly safe due to eco-friendly synthesis that does not use solvents.	Cream	Liquid	2.0-5.0%
		• Eligel-10 acts as a thickner that can maintain a stable viscosity by only adding water without a neutralization process and complex physical processes.	Lotion		
Femi AC-1	Acrylate Copolymer	• A liquid form of acrylic rheology modifier.	Gel/Cream/ Shampoo	Milky liquid	2.0-5.0%



EXOTIC BUTTERS



Almond Butter



Avocado Butter



Shea Butter



Cocoa Butter



Mango Butter



Murumuru Butter



Aloe Butter



Kokum Butter



Jojoba Butter



Olive Butter

NATURAL AND ORGANIC OILS

01

Eucalyptus Oil

02

Avocado Oil

03

Coconut Oil

04

Seasum Oil

05

Argan Oil

06

Apricot Oil

07

Rosehip Oil

08

Rosemerry oil

09

Tea tree Oil

10

Grapeseed Oil

11

Pomegranate Oil

12

Wheat Germ Oil

13

Olve Oil

14

Baobab oil





CHEMICAL.MARKET

Where Chemistry Meets Innovation

CORPORATE OFFICE:

INFRA.MARKET HOUSE : ROAD NO - 16Z, OPPOSITE ASHAR IT PARK, WAGLE ESTATE, THANE (W), MAHARASHTRA - 400604

FOLLOW US ON



8045574255



support@chemical.market